

Contents - Section 4

Subject/Contents.....	Page
How to Order	4-2
AGIE	4-3 • 4-4
Brother	4-5 • 4-6
Charmilles / Andrews	4-6 • 4-9
Fanuc	4-10 • 4-16
Hansvedt	4-17
Hitachi	4-18 • 4-20
Japax	4-21 • 4-24
LeBlond-Makino	4-25
Mitsubishi	4-26 • 4-30
Seibu	4-31 • 4-32
Sodick.....	4-33 • 4-38
EDM Drilling Machine Guides	4-39

EDM
U.S.A. Toll-free
1-800-323-0295
 Canada Toll-free
 1-800-243-5853

How to Place an Order for Machine Parts

Simply call our 800 number, Fax your order to 1-800-325-7584, or visit our Web Site at www.intech-edm.com to order on-line. Please provide:

- Your company name and customer account number, if available.
- Name of person placing order, and telephone number.
- Catalog number, quantity and description – include machine brand, model number, serial number and OEM part number, if known.

- Shipping method and any special instructions.
- Purchase order number.

Please note that we accept American Express, Discover, MasterCard and Visa as payment for purchases.

Then enjoy Intech's **60 Day Return Policy*** and **95% Same-day Service Level***.

* See Ordering Information, page 1-4, for details.

Replacement Parts for Wire-cut EDM Machines

Power Feed Contacts

Available for all major wire EDM machines, Intech EDM power feed contacts offer superior performance and long life. Oberg originally "coined" the name Power Feed Contact, since each Wire EDM machine manufacturer utilizes different terminology. The term "wire guide" is sometimes used when referring to Power Feed Contacts. Please keep in mind that a wire guide is a separate item. The following listing of manufacturer's descriptions should help.

Manufacturer	Product Description
Agie	Contact
Brother	Brush
Charmilles	Contact/Power Contact
Charmilles/Andrews	Brush/Power Brush
Elox	Conductor/Brush
Fanuc	Brush/Throw-away Tip
Hansvedt	Insert
Hitachi	Conductor Tip
Japax	Energizing Pin
Makino	Energizing Plate
Mitsubishi	Power Feed
Seibu	Electronic Brush
Sodick	Conductivity Piece

Flush Nozzles

Intech EDM flush nozzles are manufactured from premium synthetic, noncorrosive materials to

provide exact fit and function on your machine, and extended wear life.

Diamond Wire Guides

Our patented Ceramic Shield Diamond Wire Guides are the result of years of development and field experience. The natural diamond guides are manufactured to precision standards and are polished to exact size. The patented ceramic shield entry eliminates stray arcing, and permanently locks the diamond in position to ensure accuracy and long life.

Catalog Numbers & Ordering

Since there are so many models and variations of wire-cut EDM machines in existence, and the parts for different machines often look very much alike, it's important to use care in ordering. If you have any doubt, be sure to call Intech EDM Customer Service – we'll try to help.

Note 1: For your convenience, we've grouped all wire-cut machine parts by machine brand.

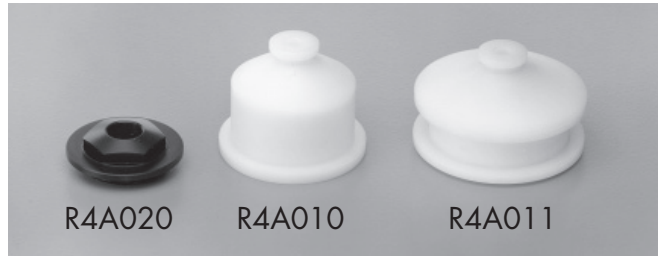
Note 2: If you don't see your specific part, call us – since we're continually adding to the parts we stock, we may have it.

All Intech EDM replacement parts for wire-cut machines meet or exceed the original OEM specifications.



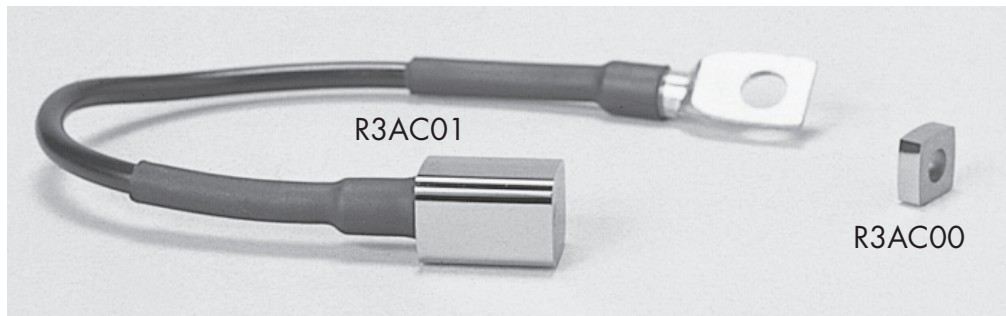
U.S.A. Toll-free
1-800-323-0295
 Canada Toll-free
 1-800-243-5853

Flush Nozzles



Catalog No.	Nozzle Location	Dimensions (mm)	OEM No.	Machine Models / Notes
R4A010	Lower	1.50 x 1.250"		AGIE "Fast-Track" Modification
R4A011	Upper	Threaded .945" Port I.D.; 1.750 x 1.250"		AGIE "Fast-Track" Modification
R4A020	Lower	—	326-764	AGIECUT 100/200/300
R4A021	Pressure Nozzle	—	155-772-7	(nozzle not pictured)

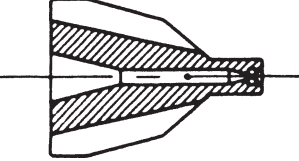
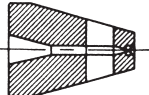
Power Feed Contacts



Catalog No.	Location	Contacts per Machine	OEM Part No.	OCP&D Catalog No.	Machine Models
R3AC00	Upper Lower	2*	199.484.7	EDM-023A	AC-50 DEM -250, -315, -400, -425, -612, -700, -740 DEM -15, -1530 (* 1 per machine)
— R3AC01	Upper	1	326.824.1 358.684.9	— EDM-015A	AC -100, -100D, -100F, -120, -150, -150F, -150P, -170, -200, -200D, -200D+SF, -220, -250, -250+SF, -270, -300, -300D, -320, -350, -370
R3AC01	Lower	1	358.684.9	EDM-015A	
R3AL01	Lower	1	443.464.3	EDM-021A ¹	
R3AU01	Upper	1	443.474.2	EDM-055A ²	
R3AU02	Upper	1	443.474.2	EDM-020A ³	Classic 2 & 3, and Evolution Series; 1 - tungsten carbide, 2 - copper tungsten, 3 - pure tungsten; (contacts not pictured)

— AGIE Replacement Parts continued on next page.

Diamond Wire Guides

Reference Sketch	Catalog No.	Hole Size (mm/In)	Machine Models / Notes
	R1A0C0	0.105 / .004	Upper/Lower Guide for AGIEs with Fast Track * Specify Threaded or Non-threaded
	R1A0C1	0.155 / .006	
	R1A0C2	0.205 / .008	
	R1A0C3*	0.255 / .010	
	R1A0C4	0.305 / .012	
	R1A0C5	0.356 / .014	
	R1A0C6	.052 / .002	Upper/Lower Window Guide for AGIEs with Fast Track
	R1A0C7	.077 / .003	

Transport Belts



Catalog No.	Width mm	Length mm	Manufacturer's Part Number	Machine Models / Notes
R50530	20	5300	318.264.9	AC200/200D
R50585	20	5850	331.394.7	AC100/100D, Sprint 20
R50575	20	5750	331.394	AC100/100D
R50570	20	5700	331.404.4	AC100/100D, Sprint 20
R50755	20	7550	337.644.9	AC300/300D
R50792	20	7920	373.354.0	AC300/D/H
R50780	20	7800	373.364.9	AC300/D/H
R50593	20	5930	396.554.8	AC220/252/270 HSS/250HSS
R50830	20	8300	400.914.8	AC320/350/370
R50620	20	6200	407.734.3	AC120/150/170
R50660	20	6600	407.744.2	AC120/150/170
R50850	20	8500	407.844.0	AC320/350/370
R50600	20	6000	447.294.0	New AC Series, 250HSS
R50609	20	6090	421.084.5	AC320/350/370
R50638	20	6380	421.094.4	AC320/350/370
R50614	20	6140	400.884.3	AC200/252/270 HSS
R50550	20	5500	341.394	AC200 D1H
R50560	20	5600	341.394.5	AC200/D/H
R58997			665.087.3	Drive Belt / Wire Belt
R58998			685.097.8	Geared Belt Synchronflex
***			689.587.4	Notched Belt

*** Available on request.

Flush Nozzles



Catalog No.	Nozzle Location	Dimensions (mm)	OEM No.	Machine Models / Notes
R4B010	Upper/Lower	4 mm Dia.		Brother HS-300, 350
R4B020	Upper	6 mm Dia.	632902000	Brother LS, HS-3100 & 3600 (nozzle not pictured)
R4B030	Lower	6 mm Dia.	632930000	Brother LS, HS-3100 & 3600, AWT (nozzle not pictured)

Diamond Wire Guides

Reference Sketch (mm)	Catalog No.	OEM No.	Hole Size (mm/In)	Machine Models / Notes
	R1BOC0	632267020- (Size)	0.110 / .004	HS-300, HS-350, (CONT Series) Common Guide
	R1BOC1		0.155 / .006	
	R1BOC2		0.205 / .008	
	R1BOC3		0.255 / .010	
	R1BOC4		0.305 / .012	
	R1BOU0	632290000- (Size)	0.110 / .004	HS-3100, HS-3600 (ATU Guide) Upper Guide
	R1BOU1		0.152 / .006	
	R1BOU2		0.210 / .008	
	R1BOU3		0.280 / .011	
	R1BOU4		0.310 / .012	
	R1BOL0	632993000- (Size)	0.110 / .004	HS-3100, HS-3600 (ATL Guide) Lower Guide
	R1BOL1		0.152 / .006	
	R1BOL2		0.210 / .008	
	R1BOL3		0.280 / .011	
	R1BOL4		0.310 / .012	

– Brother Replacement Parts continued on next page.

EDM

**U.S.A. Toll-free
1-800-323-0295**
Canada Toll-free
1-800-243-5853

Brother

Power Feed Contacts



Catalog No.	Location	Contacts per Machine	OEM Part No.	OCP&D Catalog No.	Machine Models
R3BC00	Upper Lower	1	M41B- 632276000	EDM-024B	HS-300, HS-350
R3BC01	Upper Lower	1	M48B- 632904000	EDM-070B	HS-3100, HS-3600, HS-5100
R3BC02	Upper Lower	1	—	EDM-078B (extended life)	



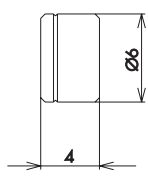
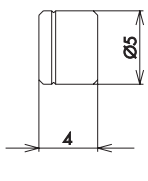
Charmilles / Andrews

U.S.A. Toll-free
1-800-323-0295
Canada Toll-free
1-800-243-5853

Flush Nozzles



Catalog No.	Nozzle Location	Dimensions (mm)	OEM No.	Machine Models / Notes
R4C010	Lower	.180" Port I.D. .735 x .525 x .530"		Charmilles 400
R4C020	Upper/Lower	7 mm Dia.	432-351	Charmilles 290, 300, 500 & 310F AWT

Reference Sketch (mm)	Catalog No.	OEM No.	Hole Size (mm/In)	Machine Models / Notes
	R1COU0	431-022	0.105 / .004	Upper Guide Stainless Steel Housing AWT Robofil 200, 290, 310, 500, 510, 2020, 4020, 6020
	R1COU1	431-114	0.155 / .006	
	R1COU2	431-112	0.205 / .008	
	R1COU3	432-511	0.255 / .010	
	R1COU4	432-512	0.305 / .012	
	R1COU5		0.260 / .010+	
	R1COL0	431-022	0.105 / .004	Lower Guide Stainless Steel Housing AWT Robofil 200, 290, 310, 500, 510, 2020, 4020, 6020
	R1COL1	431-114	0.155 / .006	
	R1COL2	431-112	0.205 / .008	
	R1COL3	432-511	0.255 / .010	
	R1COL5		0.260 / .010+	
	R1COL4	432-512	0.305 / .012	

Power Feed Contacts

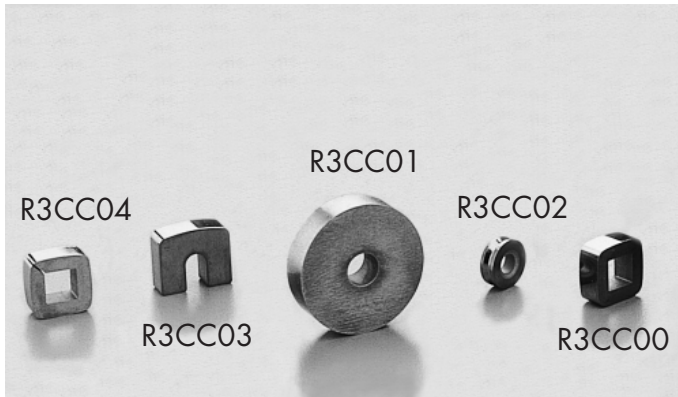


Catalog No.	Location	Contacts per Machine	OEM Part No.	OCP&D Catalog No.	Machine Models
R3CL00	Lower	1	441275	EDM-010C	ALIGNMENT CONTACT for Robofil <ul style="list-style-type: none"> • 100, 200, 330, 400, 600 without FastCut • 1000, 2000, 4000, 6000 (incl. Micro-Cut) • 2020, 4020, 6020 • 1020.1, 2020.1, 4020.1, 6020.1 • 290, 300, 310, 500, 510 (incl. all F Series models) Material: Pure Tungsten

– Charmilles/Andrews Replacement Parts continued on next page.

Charmilles / Andrews

Power Feed Contacts *(continued)*



Catalog No.	Location	Contacts per Machine	OEM Part No.	OCP&D Catalog No.	Machine Models
R3CC04 ¹ or R3CC00 ²	Upper Lower	2	342166 or 432997	EDM-009C or EMD-056C	Robofil <ul style="list-style-type: none"> • 100, 200, 330, 400, 600 without FastCut • 1000, 2000, 4000, 6000 (incl. Micro-Cut) • 2020, 4020, 6020 • 1020.1, 2020.1, 4020.1, 6020.1 Materials: ¹ Pure Tungsten; ² Tungsten Carbide
R3CC04 ¹ or R3CC00 ²	Upper	1	342166 or 432997	EDM-009C or EMD-056C	Robofil <ul style="list-style-type: none"> • 290, 300, 310, 500, 510 (including all F Series models) Materials: ¹ Pure Tungsten; ² Tungsten Carbide
R3CC01	Upper Lower	2	806549	EDM-046C	Andrews Beige Series Power Supply <ul style="list-style-type: none"> • 320, 2127 • EF20-330, -630, -930 • EF22-330, -630, -930 Material: Tungsten Carbide
R3CC02	Upper Lower	2	106462	EDM-050C	Andrews Blue Series Power Supply <ul style="list-style-type: none"> • 2127 • EF-320, -330, -630, -930 Material: Tungsten Carbide
R3CC03	*	1 or 2*	341027	EDM-044C	F Series * Depending on the model, this contact used either upper only, or both upper and lower



U.S.A. Toll-free
1-800-323-0295
 Canada Toll-free
 1-800-243-5853

Transport Belts



Catalog No.	Width mm	Length mm	Manufacturer's Part Number	Machine Models / Notes
R50525	20	5250	445040	Robofil Series - replaced 447.768 long evacuation belt (main belt)
R55045	15	450	340.780	Conveyor belt for brake - CH452/552
R50300	20	3000	340.781	
R50266	12.7	266.7		Lower roller belt, ribbed
R50305	15	3050	341.182	
R50325	15	3250	341.253	
R50335	15	3350	341.373	
R50458	15	4580	341.403	
R50518	15	5180	341.404	
R50310	15	3100	341.408	
R50315	15	3150	341.805	
R50330	15	3300	341.806	
R50504	15	5040	342.211	Conveyor belt
R50560	15	5450	342.212	Conveyor belt
R50303	15	3030	440.864	Conveyor belt
R50354	15	3545	441.192	Conveyor belt
R55356	15	3560	441.192	Conveyor belt
R50260	15	2600	442.546	Conveyor belt
R50073	15	730	442.937	Wire conveyor belt / brake
R50069	15	690	442.938	Wire conveyor belt / brake
R50054	20	540	445.231	Drive motor belt
R50056			446.494	Robofil 290/300/500 (Incl. F) - wire evacuation belt
R50040	20	400	446.880	Belt for spool drive
R50064	20	640	447.506	Brake belt - replaced 446.371
R50072	20	720	447.769	Short evacuation belt
R50048	20	485	447.805	Spool drive belt
R50067	20	675	447.806	Brake belt
R50075	20	750	542.408	Brake belt

EDM

**U.S.A. Toll-free
1-800-323-0295**
Canada Toll-free
1-800-243-5853

Flush Nozzles



Catalog No.	Nozzle Location	Dimensions (mm)	Machine Models / Notes
R4F010	Upper/Lower	3 Dia. x 16 Ht.	O, P, Q, R, T, W
R4F014	Upper/Lower	4 Dia. x 16 Ht.	O, P, Q, R, T, W
R4F015	Upper/Lower	5.5 Dia. x 16 Ht.	O, P, Q, R, T, W
R4F020	Upper/Lower	3 Dia. x 19 Ht.	O, P, Q, R, T, W
R4F024	Upper/Lower	4 Dia. x 19 Ht.	O, P, Q, R, T, W
R4F025	Upper/Lower	5.5 Dia. x 19 Ht.	O, P, Q, R, T, W
R4F030	Upper/Lower	3 Dia. x 22 Ht.	O, P, Q, R, T, W
R4F031	Upper/Lower	4 Dia. x 22 Ht.	O, P, Q, R, T, W
R4F032	Upper/Lower	5.5 Dia. x 22 Ht.	O, P, Q, R, T, W
R4F040	Lower (Auto)	5 Dia.	O, P, Q, R, T, W
R4F050	Upper (Auto)	5 Dia.	O, P, Q, R, T, W
R4F060	Nozzle Cap	N/A	O, P, Q, R, T, W
R4F070	Upper	1.119" Thread ID 0.25" Flush ID	Alpha-O
R4F080	Lower	0.25 ID	Alpha-O / Floating Nozzle
R4F090	Lower	N/A	Alpha-O / Main Body Threaded ID

* Not Pictured

Flush Nozzles



Catalog No.	Nozzle Location	Dimensions (mm)	OEM No.	Machine Models / Notes
R4F107		7	A290-8048-X771	W-O
R4F117		7 mm - 2 flat sides	A290-8048-X772	W-O
R4F210*	Upper	4	A290-8101-X775	Alpha-1A, 1B, 1C AWF
R4F211*	Lower	4	A290-8101-X774	Alpha-1A, 1B, 1C AWF
R4F212	Upper	6.5	A290-8102-X751	Alpha-1A, 1B, 1C AWF
R4F213	Lower	6.5	A290-8102-X771	Alpha-1A, 1B, 1C AWF
R4F214*	Upper	4	A290-8102-X775	Alpha-1A, 1B, 1C AWF
R4F215*	Lower	4	A290-8102-X774	Alpha-1A, 1B, 1C AWF
R4F216*	Upper	12	A290-8102-X752	Alpha-1A, 1B, 1C AWF
R4F217*	Lower	12	A290-8102-X772	Alpha-1A, 1B, 1C AWF
R4F218*	Upper	6.5	A290-8102-X776	Alpha-0C, 1C Manual

* Not Pictured

Diamond Wire Guides

Reference Sketch (mm)	Catalog No.	OEM No.	Hole Size (mm/In)	Machine Models / Notes
	R1F0C0		0.105 / .004	E, H, I, J Common Guide
	R1F0C1		0.155 / .006	
	R1F0C2		0.210 / .008+	
	R1F0C3		0.255 / .010	
	R1F0C4		0.305 / .012	
	R1F0C5		0.105 / .004	AWT I, J Common Guide (AWT = Automatic Wire Threading)
	R1F0C6		0.145 / .006	
	R1F0C7		0.157 / .006+	
	R1F0C8		0.205 / .008	
	R1F0C9		0.255 / .010	
	R1F1C0		0.305 / .012	
	R1F1C1		0.055 / .002	(300A) K, L, M, N Common Guide
	R1F1C2		0.105 / .004	
	R1F1C3		0.145 / .006	
	R1F1C4		0.157 / .006+	
	R1F1C5	A290-8018-X443	0.210 / .008+	
	R1F1C6	A290-8018-X444	0.255 / .010	
	R1F1C7	A290-8018-X445	0.305 / .012	
	R1F1C8		0.105 / .004	(60C) K, L, M, N Common Guide
	R1F1C9		0.145 / .006	
	R1F2C0		0.157 / .006+	
	R1F2C1	A290-8018-X463	0.210 / .008+	
	R1F2C2	A290-8018-X464	0.255 / .010	
	R1F2C3	A290-8018-X465	0.305 / .012	
	R1FOU0		0.105 / .004	AWT K, L, M, N Common Guide
	R1FOU1		0.145 / .006	
	R1FOU2		0.157 / .006+	
	R1FOU3		0.205 / .008	
	R1FOU4		0.255 / .010	
	R1FOU5		0.305 / .012	
	R1FOL0		0.105 / .004	AWT K, L, M, N Common Guide
	R1FOL1		0.145 / .006	
	R1FOL2		0.157 / .006+	
	R1FOL3	A290-8011-X833	0.205 / .008	
	R1FOL4	A290-8011-X834	0.255 / .010	
	R1FOL5		0.305 / .012	

EDM

U.S.A. Toll-free
1-800-323-0295
Canada Toll-free
1-800-243-5853

Diamond Wire Guides

Reference Sketch (mm)	Catalog No.	OEM No.	Hole Size (mm/In)	Machine Models / Notes
	R1F0U6		0.055 / .002	O, P, Q, R, T, T1, T3, SP, CutMate, W0, W1, W2, W3, W4 Upper Guide w/o AWT
	R1F0U7	A290-8021-X763	0.105 / .004	
	R1F0U8	A290-8021-X764	0.145 / .006	
	R1F0U9		0.157 / .006+	
	R1F1U0	A290-8021-X765	0.205 / .008	
	R1F1U1	A290-8021-X766	0.255 / .010	
	R1F1U2	A290-8021-X767	0.305 / .012	
	R1F1U3		0.335 / .013+	
	R1F0L6		0.055 / .002	O, P, Q, R, T, T1, T3, SP, CutMate, W0, W1, W2, W3, W4 Lower Guide w/o AWT
	R1F0L7	A290-8021-X773	0.105 / .004	
	R1F0L8	A290-8021-X774	0.145 / .006	
	R1F0L9		0.157 / .006+	
	R1F1L0	A290-8021-X775	0.205 / .008	
	R1F1L1	A290-8021-X776	0.255 / .010	
	R1F1L2	A290-8021-X777	0.305 / .012	
	R1F1L3		0.335 / .013+	
	R1F1U5		0.145 / .006	V (Option) T, T1, T3, W1, W2, W3, W4 Upper Guide w/AWT
	R1F1U6	A290-8032-X774	0.155 / .006	
	R1F1U7	A290-8032-X775	0.205 / .008	
	R1F1U8	A290-8032-X776	0.255 / .010	
	R1F1U9	A290-8032-X777	0.305 / .012	
	R1F2U0		0.335 / .013+	
	—		—	V (Option) T, T1, T3, W1, W2, W3, W4 Lower Sapphire V-guide * No hole; wire size w/AWT
	R1F1L5	A290-8032-X735	0.20 / .008 *	
	R1F1L6	A290-8032-X736	0.25 / .010 *	
	R1F1L7	A290-8032-X737	0.30 / .012 *	
	—		—	

EDM
U.S.A. Toll-free
1-800-323-0295
 Canada Toll-free
 1-800-243-5853

– Fanuc Replacement Parts & Diamond Wire Guides continued on next page.

Diamond Wire Guides

Reference Sketch (mm)	Catalog No.	OEM No.	Hole Size (mm/In)	Machine Models / Notes
	R1F3L9		0.055 / .002	Alpha OB, 1A, 1B, 1C AWT Lower Guide (AWT=Automatic Wire Threading)
	R1F3L0	A290-8092-X712	0.105 / .004	
	R1F3L1	A290-8092-X714	0.155 / .006	
	R1F3L2	A290-8092-X715	0.205 / .008	
	R1F3L3	A290-8092-X716	0.255 / .010	
	R1F3L4	A290-8092-X717	0.305 / .012	
	R1F3L5	A290-8092-X718	0.335 / .013	
	R1F3U9		0.055 / .002	Alpha OB, 1A, 1B, 1C AWT Upper Guide (AWT=Automatic Wire Threading)
	R1F3U0	A290-8092-X702	0.105 / .004	
	R1F3U1	A290-8092-X704	0.155 / .006	
	R1F3U2	A290-8092-X705	0.205 / .008	
	R1F3U3	A290-8092-X706	0.255 / .010	
	R1F3U4	A290-8092-X707	0.305 / .012	
	R1F3U5	A290-8092-X708	0.335 / .013	
	R1F4L9		0.055 / .002	Alpha OA, OB, OC, 1A, 1B, 1C Lower Guide
	R1F4L0	A290-8101-X740	0.105 / .004	
	R1F4L8	A290-8101-X741	0.145 / .006	
	R1F4L1	A290-8101-X742	0.155 / .006	
	R1F4L2	A290-8101-X743	0.205 / .008	
	R1F4L3	A290-8101-X744	0.255 / .010	
	R1F4L4	A290-8101-X745	0.305 / .012	
R1F4L5	A290-8101-X746	0.335 / .013		
	R1F4U9		0.055 / .002	Alpha OA, OB, OC, 1A, 1B, 1C Upper Guide
	R1F4U0	A290-8101-X730	0.105 / .004	
	R1F4U8	A290-8101-X732	0.145 / .006	
	R1F4U1		0.155 / .006	
	R1F4U2	A290-8101-X733	0.205 / .008	
	R1F4U3	A290-8101-X734	0.255 / .010	
	R1F4U4	A290-8101-X735	0.305 / .012	
R1F4U5	A290-8101-X736	0.335 / .013		
	R1F5L2		0.205 / .008	Alpha 1C, OC AWT Lower Guide (AWT=Automatic Wire Threading)
	R1F5L4		0.255 / .010	
	R1F5L5		0.305 / .012	
	R1F5L6		0.335 / .013	

EDM

U.S.A. Toll-free
1-800-323-0295
Canada Toll-free
1-800-243-5853



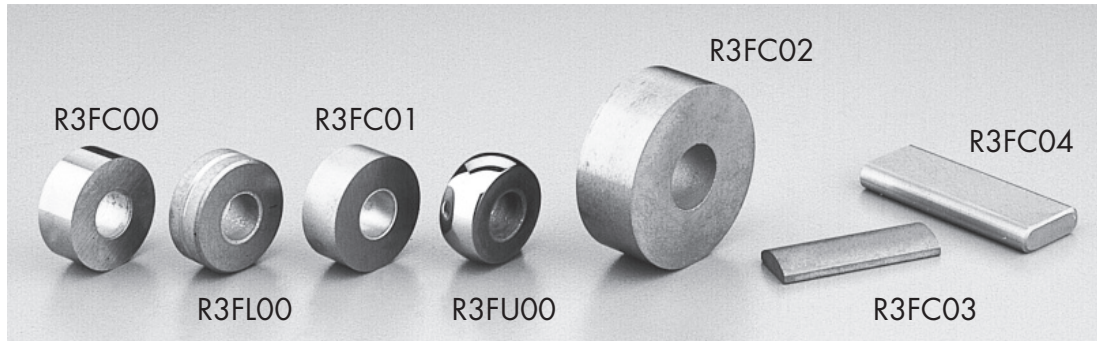
Transport Belts

Catalog No.	Width mm	Length mm	Manufacturer's Part Number	Machine Models / Notes
R54111	13	1172	A290-8039-X860	W1
R54141	13	1422	A290-8039-X861	W1
R54131	14	1315	A290-8040-X860	W2
R51162	14	1628	A290-8040-X861	W2
R57187	17	1870	A98L-0004-0359- L1870	A,W,F,T
R57193	17	1930	A98L-0004-0359- L1930	A,W,F,T
R57326	17	3260	A98L-0004-0359- L3260	V
R57333	17	3330	A98L-004-0359- L3330	Series V – Transport Belt
R57411	17	4110	A98L-0004-0359- L4110	T
R57429	17	4290	A98L-0004-0359- L4290	T
R51164	21	1644	A290-8046-X860	W3
R51166	21	1962	A290-8046-X861	W3
R51208	21	2080	A290-8047-X860	W4
R51240	21	2367	A290-8047-X861	W4
***		1870 / 1930	A98L-0004-0359/ L1870 A98L-0004-0359/ L1930	
***		3260 / 3330	A98L-0004-0153/ L3260 A98L-0004-0153/ L3330	

*** Available on request.

– Fanuc Replacement Parts continued on next page.

Power Feed Contacts



Catalog No.	Location	Contacts per Machine	OEM Part No.	OCP&D Catalog No.	Machine Models
R3FC00 ¹ or R3FC01 ²	Upper Lower	2	A97L-0126-0001/15S1P	EDM-043F ¹ or EDM-053F ²	O, P, Q, R, T, V W1, W2, W3, W4 without Auto Thread ¹ Polished ² Unpolished
	Upper	1	A97L-0126-0001/15S1P	EDM-043F ¹ or EDM-053F ²	W1, W2, W3, W4 with Auto Thread ¹ Polished ² Unpolished
	Lower	1	A97L-0126-0001/15S1P	EDM-043F ¹ or EDM-053F ²	W0 ¹ Polished ² Unpolished
R3FU00	Upper	1	A290-8048-X759	EDM-054F	W0
R3FL00	Lower	1	A290-8032-Z882	EDM-048F	W1, W2, W3, W4 with Auto Thread
R3FC02*	Upper Lower	2	A97L-0001-0664/25S1P	EDM-068F*	E to L * Ground
R3FC03	Upper Lower	2	A290-8101-X750	EDM-073F	Alpha Series 0A, 1A, 0B, 1B (including submerged and AWF features)
R3FC04	Upper Lower	2	A290-8110-X750	EDM-099F	Alpha Series 0C-S, 1C-S (including AWF feature)

EDM

U.S.A. Toll-free
1-800-323-0295
Canada Toll-free
1-800-243-5853



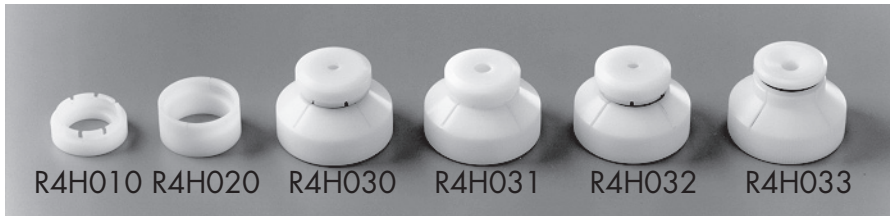
Catalog No.	Location	Contacts per Machine	OEM Part No.	OCP&D Catalog No.	Machine Models
R3ZC00	Upper Lower	2	A0452	EDM-052V	DS-2
R3ZC01*	Upper Lower	2		EDM-093X (B)	DS-30
R3ZC02*	Upper Lower	2	WS126	EDM-093V	DS-30, DS-40

* Not Pictured

EDM

**U.S.A. Toll-free
1-800-323-0295**
Canada Toll-free
1-800-243-5853

Flush Nozzles



Catalog No.	Nozzle Location	Dimensions (mm)	OEM No.	Machine Models / Notes
R4H010	N/A	N/A		H-Cut 203, 304, 345, 460
R4H020	N/A	N/A		H-Cut 203, 304, 341, 460
R4H030	Lower	4 Dia.		Hi-Speed Auto
R4H031	Lower	6 Dia.		Hi-Speed Auto
R4H032	Upper/Lower	4 Dia.		Hi-Speed (w/o dished top)
R4H033	Upper/Lower	6 Dia.		Hi-Speed (w/dished top)
R4H034	Upper/Lower	6 Dia. Version of R4H032		Hi-Speed (w/o dished top; nozzle not shown in photo)
R4H035	Upper/Lower	4 Dia. Version of R4H033		Hi-Speed (w/dished top; nozzle not shown in photo)
R4H204*	N/A	N/A	Q6205	Q Series
R4H205*	N/A	N/A	Q6086 (C477)	Q Series
R4H206*	Upper	4	43235	
R4H208*	Lower	5	43739	

* Not Pictured

EDM

**U.S.A. Toll-free
1-800-323-0295**

Canada Toll-free
1-800-243-5853

Diamond Wire Guides

Reference Sketch (mm)	Catalog No.	OEM No.	Hole Size (mm/in)	Machine Models / Notes
	R1H0U0	Q1846-(size)	0.105 / .004	H-Cut Series Upper Guide
	R1H0U1		0.155 / .006	
	R1H0U2		0.205 / .008	
	R1H0U3		0.255 / .010	
	R1H0U4		0.305 / .012	
	R1H0U5		0.355 / .014	
	R1H0L0	Q1848-(size)	0.105 / .004	H-Cut Series Lower Guide
	R1H0L1		0.155 / .006	
	R1H0L2		0.205 / .008	
	R1H0L3		0.255 / .010	
	R1H0L4		0.305 / .012	
	R1H0L5		0.355 / .014	
	R1H0C0		0.055 / .002	355R Common Guide
	R1H0C1		0.105 / .004	
	R1H0C2		0.155 / .006	
	R1H0C3		0.205 / .008	
	R1H0C4		0.255 / .010	
	R1H0C5		0.305 / .012	
	R1H0C6		0.205 / .008	H-Cut Series 335R Common Guide (for large taper cut)
	R1H0C7		0.255 / .010	
	R1H0C8		0.305 / .012	
	R1H0C9		0.355 / .014	

- Hitachi Replacement Parts continued on next page.

EDM

**U.S.A. Toll-free
1-800-323-0295**

Canada Toll-free
1-800-243-5853

Power Feed Contacts



Catalog No.	Location	Contacts per Machine	OEM Part No.	OCP&D Catalog No.	Machine Models
R3HC00	Upper Lower	2	S-1325**	EDM-017H	Without AWF (Automatic Wire Feed) H-Cut 203*, 235*, 304*, 3HP, 3Q Ultra-Cut 203*, 235*, 345*, 460*, 580*, 610*, 810* * Letter designates Power Supply ** OEM Part Number is a complete set of 2
R3HC01	Upper Lower	2	E-8312**	EDM-029H	With Waterjet and AWF H-Cut 203*, 235*, 304*, 3HP, 3Q Ultra-Cut 203*, 235*, 345*, 460*, 580*, 610*, 810* * Letter designates Power Supply ** OEM Part Number is a complete set of 2
R3HC01	Lower	1	F-1586	EDM-029H	With Mechanical AWF H-Cut 304*, 406* * Letter designates Power Supply
R3HU00	Upper	1	F-1519	EDM-030H	With Mechanical AWF H-Cut 304*, 406* * Letter designates Power Supply
R3HC02	Upper Lower	2	C-3954**	EDM-028H	Without AWF H-Cut 304*, 406* * Letter Not Applicable ** OEM Part Number is a complete set of 2
R3HU01	Upper Lower	2	43033	EDM-087H	With or without AWF H-Cut 203F, 203FH, 203R, 254R, 254RH, 254RS, 355R, 355RH, 355RS

IMPORTANT NOTE: Items indicated with ** (R3HC00, R3HC01 and R3HC02) must be ordered in pairs as they are a matched set of 2; the referenced OEM Part No. is for a complete set of 2.



U.S.A. Toll-free
1-800-323-0295
Canada Toll-free
1-800-243-5853



Catalog No.	Nozzle Location	Dimensions (mm)	Machine Models / Notes
R4J010	Lower	6 Dia. 27.2 Body Dia.	LE, LU 2 Pc. Nozzle
R4J011	Lower	.235" I.D.	LDMS 1 Pc. Nozzle
R4J020	Upper	6 Dia.	LS
R4J030	Lower	6 Dia.	LS
R4J051	Lower	5 Dia.	LS-A
R4J052	Lower	8 Dia.	LS-A
R4J061	Upper	6 Dia.	LS, LD, LU
R4J062	Upper	4 Dia.	LS, LD, LU
R4J070	Upper	6 Dia.	LS, LD, LU (Ditch)
R4J080	Upper	4 Dia.	LS, LD, LU (Long Nose)
R4J085	Upper	.150" I.D. 1.024" Dia.	LKR, LV3, LUX3, LS, LD, LU (Long Nose)
R4J090	Lower	8 Dia.	LS, LD, LU
R4J091	Lower	3 Port I.D.	LXE, LV3, LU5005 w/o Grooves & Small Holes
R4J092	Lower	.318" Port I.D.	LXE, LV3, LU5005 w/o Grooves & Small Holes
R4J100	(Special)	8 Dia.	LS, LD, LU
R4J110	Lower	4 Dia.	AF-4
R4J120	Upper	4 Dia.	AF-4
R4J130	Upper/Lower	6 Dia.	LUX, LDM
R4J131	Upper	.235" Port I.D.	LDMS w/o Cutout Slots
R4J132	Upper	6 Dia. 1.00 x .560"	LU3B (nozzle not shown in photo)
R4J133	Lower	.150" Port I.D.	LUX3, LU3B - OEM #MG511157-02 (nozzle not shown in photo)

- Japax Replacement Parts continued on next page.

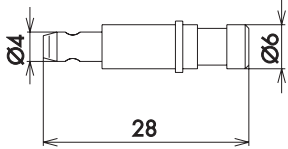
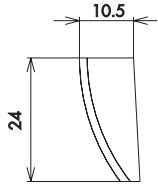
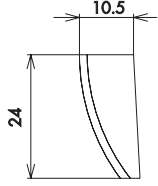
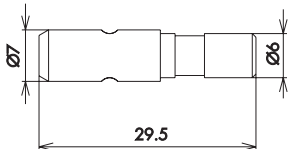
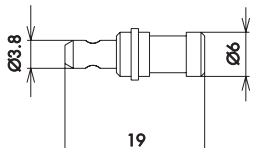
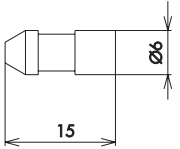
EDM

**U.S.A. Toll-free
1-800-323-0295**
Canada Toll-free
1-800-243-5853

Diamond Wire Guides

Reference Sketch (mm)	Catalog No.	Hole Size (mm/In)	Machine Models / Notes
	R1J0U0	0.055 / .002	LUX-3, LV-3, LU-3B, LUX-3B LS250S ~ 1000S LXE35 ~ 100 LXR35 ~ 100 LDM35 ~ 100 LDM-S Upper OEM #SSZ1106-1108
	R1J0U1	0.105 / .004	
	R1J0U2	0.145 / .006	
	R1J0U3	0.165 / .006+	
	R1J0U4	0.205 / .008	
	R1J0U5	0.255 / .010	
	R1J0U6	0.305 / .012	
	R1J0U7	0.375 / .014	
	R1J0L0	0.055 / .002	LUX-3, LV-3 LS250S ~ 1000S LXE35 ~ 100 LXR35 ~ 100 LDM35 ~ 100 LDM-S EX-P, EX-P20 Lower OEM #SSZ2106-2108
	R1J0L1	0.105 / .004	
	R1J0L2	0.145 / .006	
	R1J0L3	0.165 / .006+	
	R1J0L4	0.205 / .008	
	R1J0L5	0.255 / .010	
	R1J0L6	0.305 / .012	
	R1J0L7	0.375 / .014	
	R1J0U8	0.055 / .002	LS250A LS350A LS500A LS800A LS1000A Upper OEM #SSZ1006-1008
	R1J0U9	0.105 / .004	
	R1J1U0	0.145 / .006	
	R1J1U1	0.165 / .006+	
	R1J1U2	0.205 / .008	
	R1J1U3	0.255 / .010	
	R1J1U4	0.305 / .012	
	R1J1U5	0.375 / .015	
	R1J1L8	0.055 / .002	LS250A LS350A LS500A LS800A LS1000A Lower OEM #SSZ2006-2008
	R1J1L9	0.105 / .004	
	R1J1L0	0.145 / .006	
	R1J1L1	0.165 / .006+	
	R1J1L2	0.205 / .008	
	R1J1L3	0.255 / .010	
	R1J1L4	0.305 / .012	
	R1J1L5	0.375 / .015	
	R1J1L6	0.055 / .002	LS250A LS350A LS500A LS800A LS1000A Lower OEM #SSZ3006-3008
	R1J1L7	0.105 / .004	
	R1J1L8	0.145 / .006	
	R1J1L9	0.165 / .006+	
	R1J2L0	0.205 / .008	
	R1J2L1	0.255 / .010	
	R1J2L2	0.305 / .012	
	R1J2L3	0.375 / .015	

Diamond Wire Guides

Reference Sketch (mm)	Catalog No.	Hole Size (mm/In)	Machine Models / Notes
	R1J1U6	0.105 / .004	EX-P EX-P20 Upper
	R1J1U7	0.135 / .005+	
	R1J1U8	0.157 / .006+	
	R1J1U9	0.205 / .008	
	R1J2U0	0.255 / .010	
	R1J2U1	0.305 / .012	
	R1J2U2	Sapphire V-Guide	L200 L250 L300 L450 Upper
	R1J0C0	Sapphire V-Guide	L200 L250 L300 L450 Lower
	R1J2L5	0.125 / .005	AT1 AT50 LDM-FA (version A~C) Lower
	R1J2L6	0.190 / .008	
	R1J2L7	0.225 / .009	
	R1J2L8	0.275 / .011	
	R1J2L9	0.325 / .013	
	R1J2U8	0.125 / .005	LXE35-AF2 LXE50-AF2 LX380-AF2 LX3100-AF2 LUX3-AF2 Upper
	R1J2U3	0.165 / .006+	
	R1J2U4	0.185 / .007+	
	R1J2U5	0.255 / .009	
	R1J2U6	0.275 / .011	
	R1J2U7	0.325 / .013	
	R1J3L0	0.30 / .012	LXE35-AF2 LXE50-AF2 LX380-AF2 LX3100-AF2 LUX3-AF2 Lower

– Japax Replacement Parts continued on next page.

EDM

**U.S.A. Toll-free
1-800-323-0295**
Canada Toll-free
1-800-243-5853

Power Feed Contacts

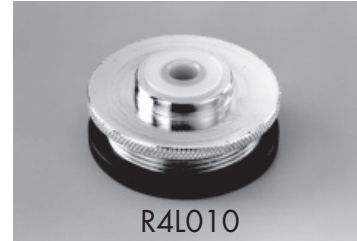


Catalog No.	Location	Contacts per Machine	OEM Part No.	OCP&D Catalog No.	Machine Models
R3JC00	Upper Lower	2	MGS-1122	EDM-025J	EX-P20, LU-3B, LUX-3, LV-3 LX3-350, -500, -800, -1000 LXR-50, -80, 100 350S, 500S, 800S, 1000S 350X, 500X, 800X, 1000X LDM-S, LDM-35, -50, -100
R3JC01	Upper Lower	2	MGK-0001	EDM-022J	LS-250A, -350A, -500A, -800A, -1000A L-300, -450 (This part is an alternate design energizing pin for L-300, -450)
R3JC02	Upper Lower	2	—	EDM-041J	L-300, -450 (This part is the original design energizing pin for L-300, -450)
R3JC03	Upper Lower	2	AF4G003L	EDM-049J	LDM-35, -50, -100 with AF-4 Auto Feed LDM-35A, -50A, -100A LDM-FA, -FAS
R3JC04	Upper Lower	2	MGK-0101	EDM-040J	Tungsten Carbide Cam LDM-35, -50, -100 LDM-S LXE-350, -500, -800, -1000 LXR-50, -80, -100 LV-3
R3JC05	Upper Lower	2	3080972	EDM-019S	LDM-20A

EDM

U.S.A. Toll-free
1-800-323-0295
Canada Toll-free
1-800-243-5853

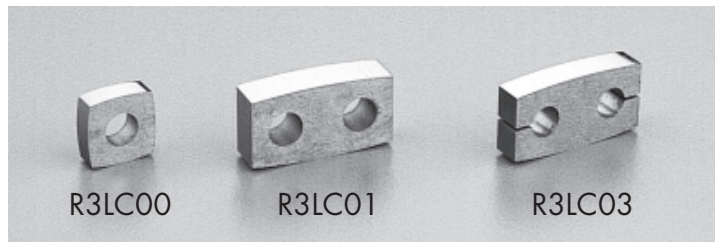
Flush Nozzles



R4L010

Catalog No.	Nozzle Location	Dimensions (mm)	Machine Models / Notes
R4L010	Lower	—	3 Pc. Flush Cup, Center Pop-up and Lock Ring

Power Feed Contacts



R3LC00

R3LC01

R3LC03

Catalog No.	Location	Contacts per Machine	OEM Part No.	OCP&D Catalog No.	Machine Models
R3LC00	Upper Lower	4	1EC80A715	EDM-013L	EC-3025-3040-7050 with Type III Head
R3LC01 or R3LC03*	Upper Lower	2	Z-248W0100100 or 207830*	EDM-014L(B) or EDM-095L*	EA-3040 EC-3025-3040-7050 with Type IV Head EC-3141, EC32, EC64, ECQ53 EE3, EE6, EE8 EH3, EH6 EQ5, EQH5 U32, U53 * Extended Life Version
R3LC04*	Upper Lower	2	Z-248W0200100	EDM-079L	U32, U32K, U53, U53K
R3LC05*	Upper Lower	2	Z-248W0200200	EDM-045L	EU64, U86

* Not Pictured

EDM

**U.S.A. Toll-free
1-800-323-0295**
Canada Toll-free
1-800-243-5853

Flush Nozzles



Catalog No.	Nozzle Location	Dimensions (mm)	OEM No.	Machine Models / Notes
R4M000	Lower	4 Dia.		DWC200H
R4M011	Upper	6 Dia.		N, F
R4M012	Lower	5 Dia.		N, F
R4M020	Upper	4 Dia. w/Ditch		G, H
R4M021	Upper	4.5 Dia. w/Ditch	X183C439H01	G, H
R4M022	Upper	4 Dia. w/o Ditch		G, H
R4M030	Upper	6 Dia. w/o Ditch		G, H
R4M040	Upper	8 Dia. w/o Ditch	X183C439H03	G, H
R4M050	Upper	4 Dia. w/Long Nose		G, H
R4M061	Upper	4 Dia.		H1, A, B, Z Auto AF1
R4M062	Upper	6 Dia.		H1, A, B, Z Auto AF1
R4M063	Upper	8 Dia.		H1, A, B, Z Auto AF1
R4M070	Lower	4 Dia. w/Ditch	X053C491H01	G, H
R4M071	Lower	4 Dia. w/o Ditch		G, H
R4M080	Lower	6 Dia. w/o Ditch		G, H
R4M090	Lower	8 Dia. w/o Ditch		DWC90H1/C110 Flat
R4M100	Lower	4 Dia. w/Side Cut		(plastic) H1, A, B, Z, Auto
R4M101*	Lower	4 Dia.	X053C621H01	(ceramic) H1, A, B, Z, Auto
R4M110	Upper	4 Dia.		H1, A, B, Z, Auto AF1
R4M114*	Jet Nozzle	0.5	X058D054	HA, SB, SA, SZ, SX, CX, FK, FX-K, QA - AF2 & AF3 Type
R4M115*	Jet Nozzle	1.0	X054D826H08	
R4M116*	Jet Nozzle	1.5	X058D054H02	
R4M124	Lower	4 Dia.		CS, SX, AF2-3 (plastic)
R4M134	Upper	4 Dia.		CS, SX, AF2-3 (plastic)
R4M135*	Upper	0.4	X186C793H01	
R4M136*	Upper	0.8	X186C793H02	
R4M213*	Lower	4 (ceramic)	X054D881H03	RA, CX, SX, FX, AF2, 3
R4M214*	Lower	8 (ceramic)	X054D881H04	RA, CX, SX, FX, AF2, 3
R4M216*	Upper		(Nozzle Holder)	CS, SX, AF2-3
R4M217	Upper	4 Dia.	X196C451H01	FX, AF3
R4M218*	Upper	8 Dia.	X196C451H02	AF3

* Not Pictured

Mitsubishi

Power Feed Contacts*

Catalog No.	Location	Contacts per Machine	OEM Part No.	OCP&D Catalog No.	Machine Models
R3MC00 ¹ or R3MC01 ²	Upper Lower	2	M067P X054D125H05 M067	EDM-001M ¹ or EDM-080M ²	DWC 80/100/200 with Future Cut DWC 70/90/100/110/200/300/400/500 Series C, CR, CS, F, F-1, G, H, H-, H-1, HA SB, SZ without AF (Auto Feed) 1 – Polished 2 – Unpolished
R3MU00	Upper	2	M002A X054D020H01	EDM-011M	DWC 80/100/200 without Future Cut
R3ML00	Lower	1	M002B X054D024H01	EDM-012M	
R3MU01 and R3MU02	Upper	1 and 1	S006 X054D199H01 and S095 X054D216H01	EDM-003M and EDM-004M	DWC 90/110/200 Series F, F-1, G & H with SK (Auto Thread) 1 – Polished 2 – Unpolished
R3ML01 ¹	Lower	1	S088P X054D129H04 S088	EDM-002M ¹	
R3ML02 ²			EDM-081M ²		
R3MU03 or R3MU07 ³	Upper	1	A302 (S239) X054D345H01 or S447 X054D345H02	EDM-027M(B-) or EDM-075M ³	DWC 90/110/200 Series F, F-1, G & H with SK (Auto Thread) 1 – Polished 2 – Unpolished 3 – Extended Life
R3ML01 ¹ or R3ML02 ²	Lower	1	S088P X054D129H04 S088	EDM-002M ¹ or EDM-081M ²	
R3MU04 and R3MU05	Upper	2	S369P and S371P	EDM-038M and EDM-039M	DWC 90/100/110/200/300/400/500 Series H-, H-1, HA, SB, SZ and Z with AF1 (Auto Feed 1)
R3ML01 ¹ or R3ML02 ²	Lower	1	S088P X054D129H04 S088	EDM-002M ¹ or EDM-081M ²	Only for Use with .004 In/0.10mm Dia. Wire 1 – Polished 2 – Unpolished
R3MU06	Upper	1	S303 X054D476H02	EDM-057M	DWC 90/100/110/200/300/400/500 Series H-, H-1, HA, SB, SZ and Z with AF1 (Auto Feed 1) High Speed Wire Breakage Detector
R3MC03	Upper Lower	2	S-632 X056C075H01 (X053C934H01)	EDM-077M	DWC-150 Series SZ DWC-200/300/400/500 Series HA CX-2/20, FX-1/10, SX-1/2/10/20 (Polished) All with AF2 or AF3 (Auto Feed 2 or 3)
R3MC04	Upper Lower	2	S-632UP X056C075H01 (X053C934H01)	EDM-077M (U)	DWC-150 Series SZ DWC-200/300/400/500 Series HA CX-2/20, FX-1/10, SX-1/2/10/20 (UnPolished) All with AF2 or AF3 (Auto Feed 2 or 3)

* Pictured on following page.

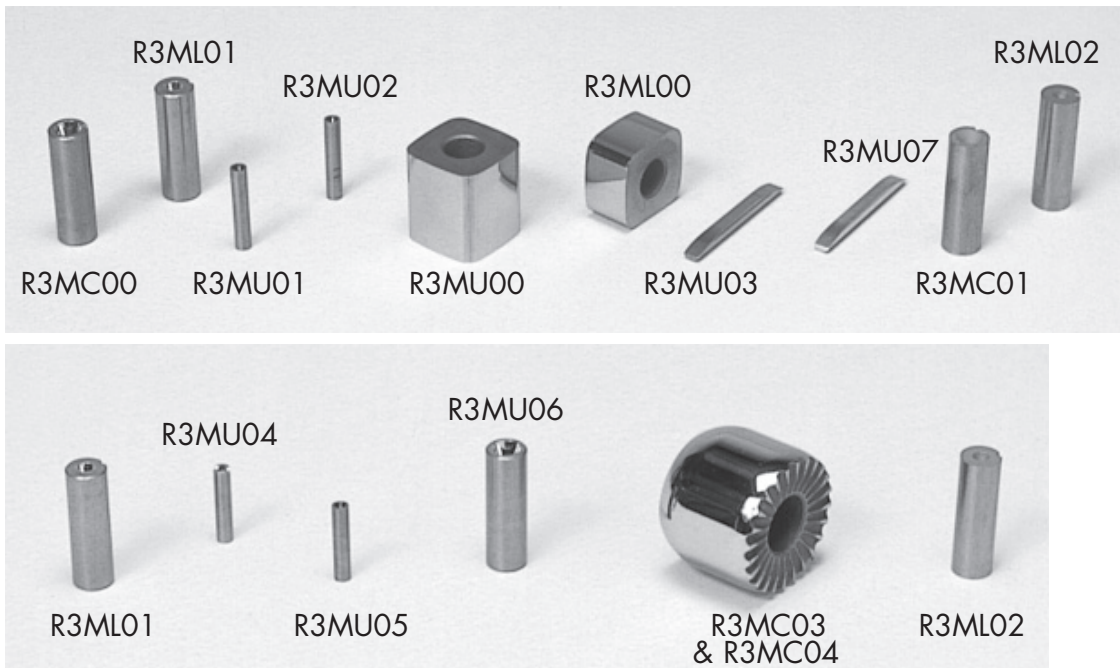
– Mitsubishi Replacement Parts continued on next page.



**U.S.A. Toll-free
1-800-323-0295**
Canada Toll-free
1-800-243-5853

Mitsubishi

Power Feed Contacts



Diamond Wire Guides

Reference Sketch (mm)	Catalog No.	OEM No.	Hole Size (mm/In)	Machine Models / Notes
	R1M1L3	X052B176-G53	0.205 / .008	Lower (with Thread)
	R1M1L4	X052B176-G54	0.255 / .010	C, H1, HA, SB
	R1M1L5	X052B176-G55	0.305 / .012	with AWT (Ruby)
	R1M1L6	X052B176-G65	0.335 / .013+	
	R1M0U6	X052B123-G53	0.205 / .008	Upper (with Thread)
	R1M0U7	X052B123-G54	0.255 / .010	C, H1, HA, SB
	R1M0U8	X052B123-G56	0.305 / .012	with AWT (Diamond)
	R1M0U9	X052B102-G53	0.205 / .008	Upper
	R1M1U0	X052B102-G54	0.255 / .010	110H+
	R1M1U1	X052B102-G55	0.305 / .012	with AWT
	R1M2L9		0.050 / .002	Lower
	R1M2L0	X052B243-G63	0.110 / .004	HA, AF2
	R1M2L1	X052B243-G61	0.205 / .008	Series SX, CX, FX
	R1M2L4	X052B243-G65	0.255 / .010	with AWT
	R1M2L5	X052B243-G62	0.305 / .012	
	R1M2U9		0.050 / .002	Upper
	R1M2U0	X053C834-G51	0.110 / .004	HA, AFT
	R1M2U2		0.150 / .006	Series SX, CX, FX
	R1M2U1	X053C834-G53	0.205 / .008	with AWT
	R1M2U4	X053C834-G54	0.255 / .010	
	R1M2U5	X053C834-G56	0.305 / .012	



U.S.A. Toll-free
1-800-323-0295
Canada Toll-free
1-800-243-5853

Diamond Wire Guides

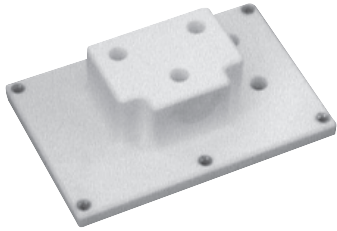
Reference Sketch (mm)	Catalog No.	OEM No.	Hole Size (mm/In)	Machine Models / Notes		
	R1M0C0	X052B054-G51	0.105 / .004	H, H1, (with Thread) DWC 110, 90CS non-AWT AWT = Automatic Wire Threading		
	R1M0C1	X052B054-G52	0.155 / .006+			
	R1M0C2	X052B054-G53	0.205 / .008			
	R1M0C3	X052B054-G54	0.255 / .010			
	R1M0C4	X052B054-G55	0.305 / .012			
	R1M0C5		0.335 / .013+			
	R1M0C6	X052B040-G62	0.105 / .004	G, H (without Thread) non-AWT		
	R1M0C7	X052B040-G63	0.155 / .006+			
	R1M0C8	X052B040-G64	0.205 / .008			
	R1M0C9		0.21 / .008+			
	R1M1C0	X052B040-G65	0.255 / .010			
	R1M1C1		0.26 / .010+			
	R1M1C2	X052B040-G66	0.305 / .012			
	R1M1C3	X053C082-G58	0.105 / .004	DWC 80, 100, 200 w/FC F Series - Standard		
	R1M1C4	X053C082-G60	0.155 / .006+			
	R1M1C5		0.202 / .008			
	R1M1C6	X053C082-G51	0.205 / .008			
	R1M1C7		0.21 / .008+			
	R1M1C8	X053C082-G56	0.255 / .010			
	R1M1C9		0.26 / .010+			
	R1M2C0	X053C082-G65	0.305 / .012			
		R1M0U0	X053C137-G69		0.205 / .008	Upper F1, G, H with AWT
		R1M0U1			0.21 / .008+	
R1M0U2		X053C137-G72	0.255 / .010			
R1M0U3			0.26 / .010+			
R1M0U4		X053C137-G73	0.305 / .012			
R1M0U5			0.31 / .012+			
	R1M0L1	X052B092-G54	0.205 / .008	Lower (with Thread) G, H with AWT		
	R1M0L2		0.21 / .008+			
	R1M0L3	X052B092-G55	0.255 / .010			
	R1M0L4		0.26 / .010+			
	R1M0L5	X052B092-G56	0.305 / .012			
	R1M0L6		0.31 / .012+			
	R1M0L7	X053C188-G54	0.205 / .008	Lower (without Thread) F1, G, H with AWT		
	R1M0L8		0.21 / .008+			
	R1M0L9	X053C188-G55	0.255 / .010			
	R1M1L0		0.26 / .010+			
	R1M1L1	X053C188-G56	0.305 / .012			
	R1M1L2		0.31 / .012+			

- Mitsubishi Replacement Parts continued on next page.

EDM

**U.S.A. Toll-free
1-800-323-0295**
Canada Toll-free
1-800-243-5853

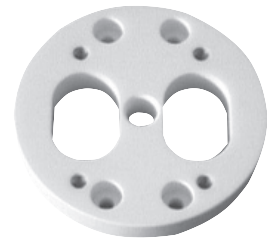
Replacement Parts



ASP301



ASP307



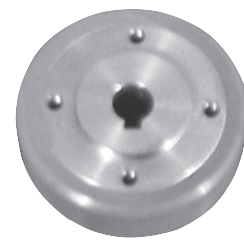
ASP308



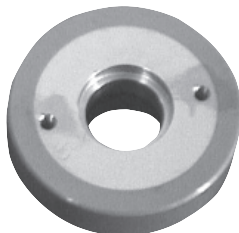
ASP309



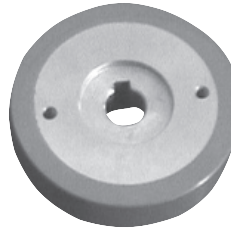
ASP405



ASP406



ASP407



ASP408



ASP456

Catalog No.	Description	Mitsubishi Machine Models
ASP301	Upper Insulating Plate (OEM# X053C162H01)	F, G, H
ASP307	Lower Insulating Plate (OEM# X056C110G51)	SX, CX Series SZ, SA, SB
ASP308	Lower Insulating Plate (OEM# X056C273G51)	FX10
ASP309	Lower Insulating Plate (OEM# X056C356G51)	FX20, FX30
ASP405	Pinch Roller (Gear Type) (OEM# X053C778G51)	HA, SZ, SX Series
ASP406	Capstan Roller (Gear Type) (OEM# X053C779G51)	HA, SZ, SX Series
ASP407	Pinch Roller (OEM# X058D340G51)	FX Series
ASP408	Capstan Roller (OEM# X058D339G51)	FX Series
ASP456	Lower Roller (OEM# X183C442H01)	H, HA, C Series

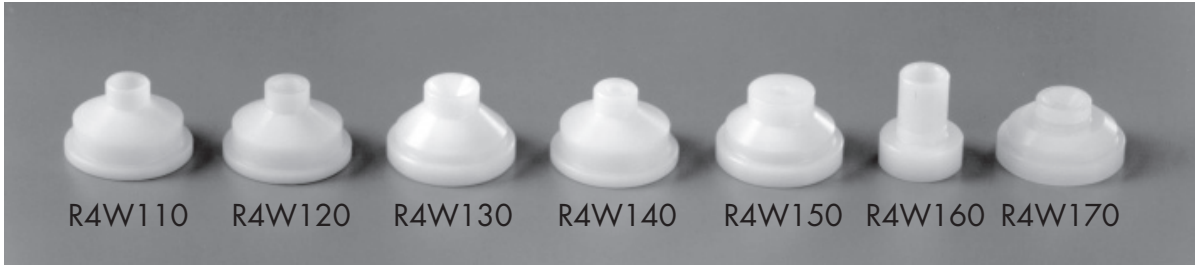
The parts shown are the most common and popular replacement parts for Mitsubishi machines. However, our manufacturer has many others, so if you need a part not shown, please call Intech EDM Customer Service and tell us what you need; we can probably get it for you.

All Intech EDM replacement parts meet or exceed the original OEM specification.

EDM

U.S.A. Toll-free
1-800-323-0295
Canada Toll-free
1-800-243-5853

Flush Nozzles



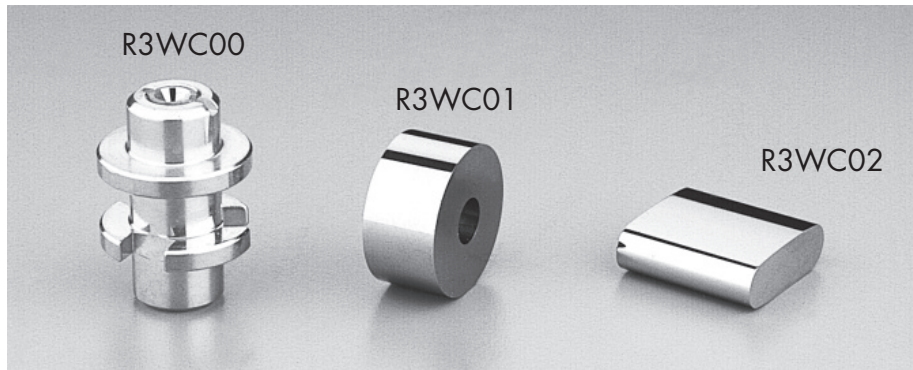
Catalog No.	Nozzle Location	Dimensions (mm)	Machine Models / Notes
R4W110	Upper/Lower	6 Dia.	F, K
R4W120	Upper/Lower	4 Dia.	F, K
R4W130	Upper/Lower	3 Dia.	F, K
R4W140	Upper/Lower	3 Dia.	B, E
R4W150	Upper/Lower	5 Dia.	F, K
R4W160	Upper/Lower	6 Dia.	Old Type
R4W170	Upper/Lower	3 Dia.	B, E Chamfered

Diamond Wire Guides

Reference Sketch (mm)	Catalog No.	Hole Size (mm/In)	Machine Models / Notes
	R1W0C0	.105 / .004	Upper/Lower or Common Guide F and K types OEM # 4451771 (- size)
	R1W0C1	.155 / .006+	
	R1W0C2	.16 / .006+	
	R1W0C3	.21 / .008+	
	R1W0C4	.22 / .008+	
	R1W0C5	.26 / .010+	
	R1W0C6	.27 / .010+	
	R1W0C7	.31 / .012+	
	R1W0C8	.32 / .012+	Upper/Lower or Common Guide B and E types OEM # 4433681 (- size)
	R1W0C9	.21 / .008+	
	R1W1C0	.22 / .008+	
	R1W1C1	.26 / .010+	
	R1W1C2	.27 / .010+	
	R1W1C3	.31 / .012+	
	R1W1C4	.32 / .012+	

EDM
 U.S.A. Toll-free
1-800-323-0295
 Canada Toll-free
 1-800-243-5853

Power Feed Contacts



Catalog No.	Location	Contacts per Machine	OEM Part No.	OCP&D Catalog No.	Machine Models
R3WC00	Upper	1	4456239 (4435332)	EDM-026U	APC-3A EW 400/600 with High Speed Head EW 300/400/600/1000 Series E with High Speed Head EW 300/400/450/600/700/1000 Series F, F1, F2, F3, F4, K, K1
	Lower	1	4456239 (4434332)		
R3WC01	Upper Lower	2	5417819	EDM-031U	EW 400/600 EW 300/400/600/1000 Series E EWP 300A
R3WC02	Upper Lower	2	4469013	EDM-069U	EW-A5, EW-A5S, EW-A7S

EDM

**U.S.A. Toll-free
1-800-323-0295**

Canada Toll-free
1-800-243-5853



Catalog No.	Nozzle Location	Dimensions (mm)	OEM No.	Machine Models / Notes
R4S005	Upper/Lower	.295" Port I.D.		A280L (Lower AWF Only)
R4S006	Upper/Lower	.125" Port I.D.		L-Series
R4S007	Upper/Lower	6 Port I.D. .706" O.D. thread		L-Series
R4S010	Upper/Lower	5 Dia.		E3WS, BF250, EPOC300, AW33
R4S021	Upper/Lower	5 Dia.		E3WS, BF250, EPOC300, AW330, 453
R4S040	Upper/Lower	5 Dia.		AP150, AW330, 453, EPOC
R4S050	Upper/Lower	9.5 Dia.		AP150, AWS330, 453, EPOC
R4S060	Upper/Lower	5 Dia.		AP150, AWS330, 453, EPOC
R4S070	Upper	6 Dia. .623" O.D. Thread		325 (AWF), A530, 500, AW330, 453, BF275, 530, EPOC
R4S075	Upper	6 Dia.		A350, A500, A280, A320
R4S080	Lower	5.5 Dia.		A530, 500, AW330, 453, BF275, 530, EPOC
R4S090	Lower	6 Dia.		AP500, A325, EPOC
R4S091*	Lower	10 Dia.	308 1675	EPOC
R4S092*	Lower	6 Dia.	308 6386	A500, AQ325L

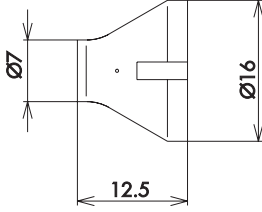
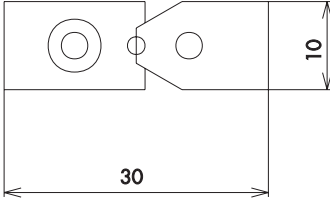
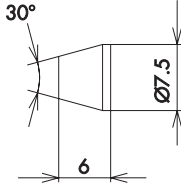
* Not Pictured

EDM

**U.S.A. Toll-free
1-800-323-0295**
Canada Toll-free
1-800-243-5853

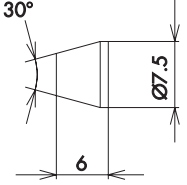
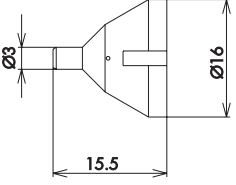
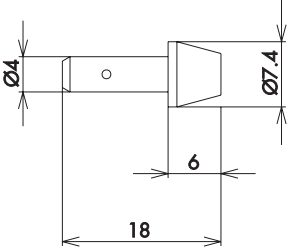
– Sodick Replacement Parts continued on next page.

Diamond Wire Guides

Reference Sketch (mm)	Catalog No.	OEM No.	Hole Size (mm/In)	Machine Models / Notes
	R1S0C0	3080998	0.11 / .004	Upper/Lower or Common Guides for: A300-1100, A300W-1100W A350WH-750WH A500P-600P A500WP-600WP A350SS-500SS A320D-530D AA350-750 AA350WP-500WP AP-200-550 PGW3, PGW200 EXC100-100S BF-275, BF-280L AW-330, AW-453 EPOC 300-1000 JL20-85, (87-3 Type)
	R1S0C1	3081015	0.12 / .004+	
	R1S0C2	3080999	0.16 / .006+	
	R1S0C3	3081016	0.17 / .006+	
	R1S0C4	3081000	0.21 / .008+	
	R1S0C5	3080982	0.22 / .008+	
	R1S0C6	3080990	0.26 / .010+	
	R1S0C7	3081017	0.27 / .010+	
	R1S0C8	3080991	0.31 / .012+	
	R1S0C9	3081018	0.32 / .012+	
	R1S1C0	3080046	0.11 / .004	Upper/Lower or Common Guides for: A300-1100, A300W-1100W A350WH-750WH A500P-600P A500WP-600WP A320D-520D AA350-1100 AP200-550 PGW200, EXC100 EXC100S, BF-275 BF280L, AW-330 AW453, JL20-85 EPOC 300-1000 (mate Guide)
	R1S1C1	3080051	0.12 / .004+	
	R1S1C2	3080053	0.16 / .006+	
	R1S1C3	3080055	0.17 / .006+	
	R1S1C4	3080047	0.21 / .008+	
	R1S1C5	3080058	0.22 / .008+	
	R1S1C6	3080629	0.26 / .010+	
	R1S1C7	3080061	0.27 / .010+	
	R1S1C8	3081934	0.31 / .012+	
	R1S1C9	3080063	0.32 / .012+	
	R1S2C0	3080232	0.06 / .002+	Upper/Lower or Common Guides for: AP-150, PGW150 BF-250, BF-275 EPOC 3W-8W EPOC 300-1000 150W-654W G03, G05 GW3, GW5 GOW3, GOW5 GEA, G5A (Diamond Guide)
	R1S2C1	3080233	0.07 / .002+	
	R1S2C2	3080237	0.11 / .004	
	R1S2C3	3080238	0.12 / .004+	
	R1S2C4	3080240	0.16 / .006+	
	R1S2C5	3080241	0.17 / .006+	
	R1S2C6	3080244	0.21 / .008+	
	R1S2C7	3080245	0.22 / .008+	
	R1S2C8	3080248	0.26 / .010+	
	R1S2C9	3080249	0.27 / .010+	
	R1S3C0	3080250	0.31 / .012+	
	R1S3C1	3080251	0.32 / .012+	
	R1S3C2		0.40 / .016	

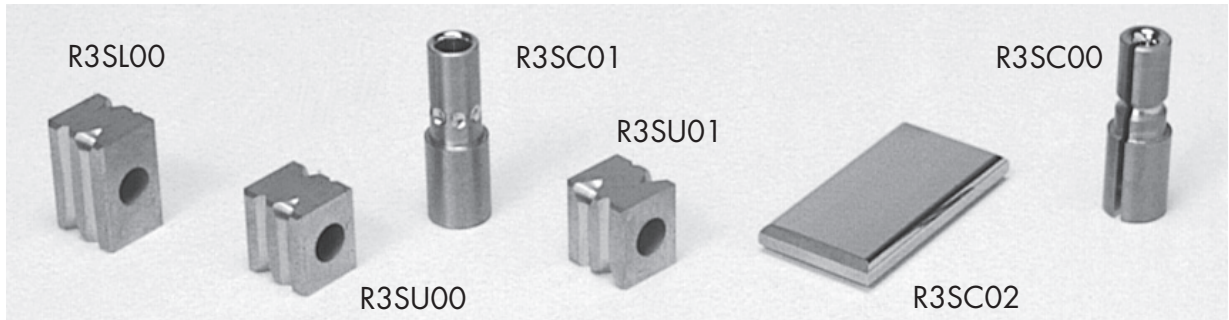


U.S.A. Toll-free
1-800-323-0295
Canada Toll-free
1-800-243-5853

Reference Sketch (mm)	Catalog No.	OEM No.	Hole Size (mm/In)	Machine Models / Notes
	R1S3C3	3080204	0.06 / .002+	Upper/Lower or Common Guides for: A300-1100, A300W-1100W A350WH-750WH A500P-600P A500WP-600WP A320D-520D AA350-1100 AP200-550 PGW200, EXC100 EXC100S, BF-275 BF280L, AW-330 AW453, JL20-85 EPOC 300-1000 Sapphire Guide
	R1S3C4	3080205	0.07 / .002+	
	R1S3C5	3080210	0.11 / .004	
	R1S3C6	3080211	0.12 / .004+	
	R1S3C7	3080213	0.16 / .006+	
	R1S3C8	3080214	0.17 / .006+	
	R1S3C9	3080219	0.21 / .008	
	R1S4C0	3080220	0.22 / .008+	
	R1S4C1	3080223	0.26 / .010+	
	R1S4C2	3080224	0.27 / .010+	
	R1S4C3	3080225	0.31 / .012+	
	R1S4C4	3080226	0.32 / .012+	
	R1S4C5		0.40 / .016	
	R1S4C6	3081136	0.21 / .008	Upper/Lower or Common Guides for: (87-3 L Type) A280L A350L A500L EPOC L
	R1S4C7	3081137	0.22 / .008+	
	R1S4C8	3081138	0.26 / .010+	
	R1S4C9	3081139	0.305 / .012	
	R1S5C0		0.06 / .002+	Upper/Lower or Common Guides for: AP-150 EPOC 300 IW EPOC 600 IWH EPOC 800 453 330W
	R1S5C1		0.07 / .002+	
	R1S5C2		0.11 / .004	
	R1S5C3		0.12 / .004+	
	R1S5C4		0.16 / .006+	
	R1S5C5		0.17 / .006+	
	R1S5C6		0.21 / .008	
	R1S5C7		0.22 / .008+	
	R1S5C8		0.26 / .010+	
	R1S5C9		0.27 / .010+	
	R1S6C0		0.31 / .012+	
	R1S6C1		0.32 / .012+	

– Sodick Replacement Parts continued on next page.

Power Feed Contacts

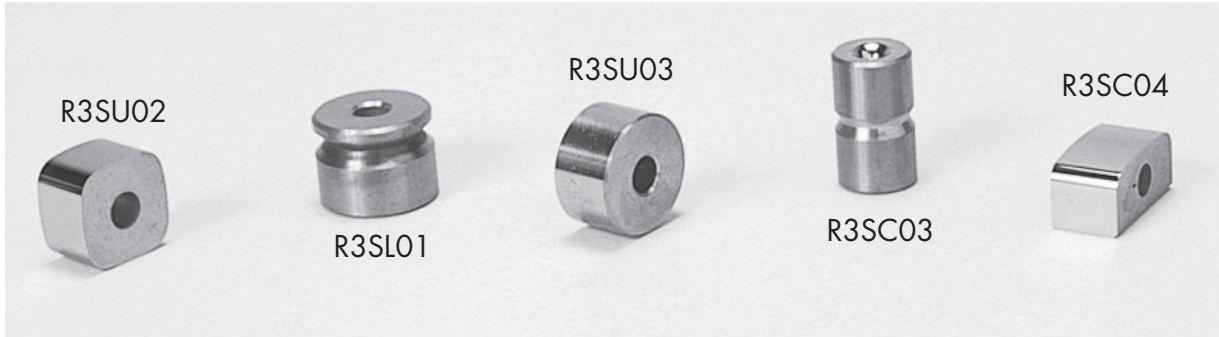


Catalog No.	Location	Contacts per Machine	OEM Part No.	OCP&D Catalog No.	Machine Models
R3SC00 or R3SC01*	Upper Lower	2	3080301 (alternate*)	EDM-051S or EDM-007S*	Silver Series Power Supply with AWT (Automatic Wire Threading) AS-330/453, EPOC 300/500/600/800 * - Alternate used in selected older models.
R3SU00	Upper Right	1	3080307	EDM-006S	Silver Series Power Supply without AWT AS-330/453, BF-250/275 EPOC 300/500/600/800 E3WS
R3SU01	Upper Left	1	3080308	EDM-018S	
R3SL00	Lower	1	3083011	EDM-005S	
R3SC00 or R3SC01*	Upper	1	3080301 (alternate*)	EDM-051S or EDM-007S*	Mark 11 & Mark 20/21 Gold Series Power Supplies (-2 = with AWT) A2-350/350W/500/500W AP2-200/300/450 AW2-330/453, BF2-275 EPOC2-300/500/600/800
R3SC02	Lower	1	3080972	EDM-019S	* - Alternate used in selected older models
R3SC02	Upper Lower	2	3080972	EDM-019S	Mark 11 & Mark 20/21 Gold Series Power Supplies (-3 = with AWT; -4 w/ or w/o AWT) A3-280/350/350W/500/500W A4-50/320D/320S/350L/350WL 500L/500WL/530D/530S/750WL 600 WP AP3-200/330 BF3- 250/275/280 EPOC3-300/500/600/800/1100 PGW4-3/5/200

EDM

**U.S.A. Toll-free
1-800-323-0295**

Canada Toll-free
1-800-243-5853



Catalog No.	Location	Contacts per Machine	OEM Part No.	OCP&D Catalog No.	Machine Models
R3SU02	Upper	2	3080318	EDM-032S	GW40 or G40 Power Supply
R3SL01	Lower	1	3080314	EDM-033S	330W, 453W, 654W, 1WH, G3A
R3SU03	Upper	1	3080317	EDM-034S	Mark 62 Power Supply
R3SL01	Lower	1	3080314	EDM-033S	1W, 330W, 453W, 654W
R3SC03	Upper Lower	1	3080320	EDM-035S	Silver Series Power Supply without AWT (Automatic Wire Threading) AP-150
R3SC04	Upper Lower	2 1	3081325	EDM-036S	Silver Series Power Supply without AWT (Automatic Wire Threading) 150W

EDM
U.S.A. Toll-free
1-800-323-0295
 Canada Toll-free
 1-800-243-5853

– Sodick Replacement Parts continued on next page.

Transport Belts



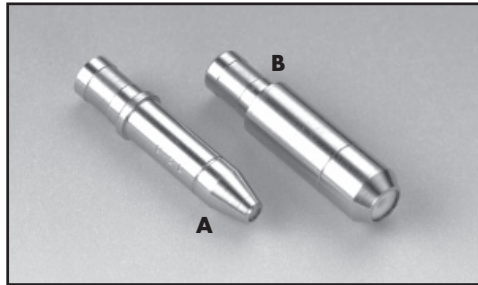
Catalog No.	Width mm	Length mm	Manufacturer's Part Number	Machine Models / Notes
R58046	18	465	3050123	83, 84, 85, 85-2
R58260	18	2600	3050117	330 W, 83
R58315	18	3155	3050120	330W, 83
R58270	18	2700	3050118	453 W, 83
R58278	18	2780	2040062	453W
R58333	18	3335	2040069	453W
R58194	42	1945	2040076	453W
R58204	42	2040	2040077	453W
R58158	18	1580	2040140	E500
R58167	18	1675	2040141	E500
R58158	18	1580	2040140	E500
R58163	18	1630	2040050	E500
R58268	18	2680	2040061	330 W
R58324	18	3235	2040068	330 W
R58166	18	1660	2040488/0487	330 W
R58169	18	1690	2040138	E3W, E300
R58174	18	1740	2040053	E3W, E300
R58183	18	1830	2040056	
R58202	18	2020	2040059	
R58179	18	1785	2040139	
R58178	18	1780	2040142	
R58197	18	1970	2040144	
R58206	18	2065	2040145	
R58175	18	1750	3040084	
R58171	18	1715	3040083	
R58137	18	1370	2040534	
R58389	18	3895	2040610	
R58139	18	1390	2040535	
R58347	18	3475	2040813	
R58325	18	3255	3050121	
R52159	42	1590	3050125	
R52166	42	1665	3050126	
R52191	42	1915	3050127	
R52201	42	2010	3050128	
R58187	18	1875	2040143	
R58137	18	1370	2040534	
R58343	18	3434	2040814	
R58304	18	3045	2040813	
R58308	18	3085	2040814	

EDM Drilling Machine Guides

These guides fit a variety of small hole EDM drilling machines (as indicated), commonly called "hole poppers", which are typically used to drill start holes for wire-cut EDM applications.

They are precision made from stainless steel and have ceramic liners, providing excellent wear and accurate location.

General Purpose Guides



These guides fit some Japanese machines (Astec, for example) and most Taiwanese machines.

Sizes from 0.1 through 1.0mm are Design A (see photo); sizes from 1.1 through 3.0 are Design B, which has a thicker ceramic liner and stainless steel casing for additional strength.

Catalog Number	Inner Dia. (mm)
R6P010	0.10
R6P013	0.13
R6P015	0.15
R6P020	0.20
R6P025	0.25
R6P030	0.30
R6P040	0.40
R6P050	0.50
R6P060	0.60
R6P070	0.70
R6P080	0.80
R6P090	0.90
R6P100	1.0
R6P110	1.1
R6P120	1.2
R6P130	1.3
R6P140	1.4

Catalog Number	Inner Dia. (mm)
R6P150	1.5
R6P160	1.6
R6P170	1.7
R6P180	1.8
R6P190	1.9
R6P200	2.0
R6P210	2.1
R6P220	2.2
R6P230	2.3
R6P240	2.4
R6P250	2.5
R6P260	2.6
R6P270	2.7
R6P280	2.8
R6P290	2.9
R6P300	3.0

K1C Guide Sets



These guide sets are for Sodick K1C and earlier model Charmilles machines. Sapphire versions of these guides are available on request.

Each size set includes the guide, a collet, 10 rubber seals, and 1 spacer (see photo). **For intermediate sizes, select the next larger size.** For example, if you are using a 0.85mm tube, select the 0.90mm size.

Catalog Number	OEM No.	Inner Dia. (mm)
R6P803	3562016	0.30
R6P804	3562017	0.40
R6P805	3562018	0.50
R6P806	3562019	0.60
R6P807	3562020	0.70
R6P808	3562021	0.80
R6P809	3562022	0.90
R6P810	3562023	1.0
R6P811	3562024	1.1
R6P812	3562025	1.2
R6P813	3562026	1.3
R6P814	3562027	1.4
R6P815	3562028	1.5
R6P816	3562029	1.6

Catalog Number	OEM No.	Inner Dia. (mm)
R6P817	3562030	1.7
R6P818	3562031	1.8
R6P819	3562032	1.9
R6P820	3562033	2.0
R6P821	3562034	2.1
R6P822	3562035	2.2
R6P823	3562036	2.3
R6P824	3562037	2.4
R6P825	3562038	2.5
R6P826	3562039	2.6
R6P827	3562040	2.7
R6P828	3562041	2.8
R6P829	3562042	2.9
R6P830	3562043	3.0

EDM

**U.S.A. Toll-free
1-800-323-0295**
Canada Toll-free
1-800-243-5853